

A

B

C

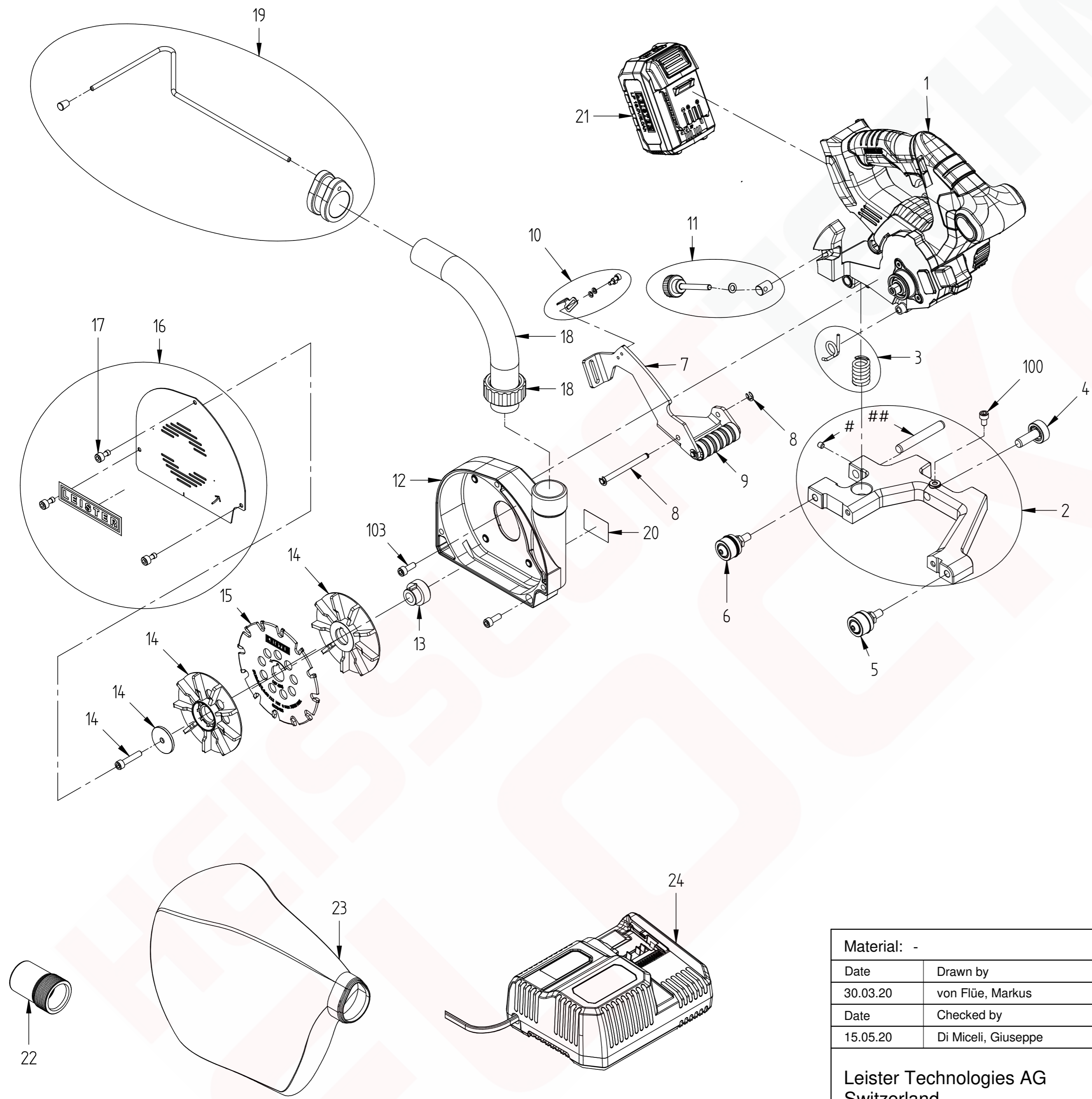
D

Pos.	Dimension	BN / DIN	locking torque [Nm]	Loctite 242 100.164	MicroLube GBU-Y 131 106.939
2			-	X (#)	X (##)
8			-		X
11			-		X
100	M 6 x 10	BN 610 / DIN	-		
102	M 4 x 6	BN 610 / DIN	-		
103	M 6 x 30	BN 610 / DIN	7.5	X	

1

2

3



Material: -			Volume:		
Date	Drawn by	GROOVER 500-LP			Sheet
30.03.20	von Flüe, Markus				1
Date	Checked by				of
15.05.20	Di Miceli, Giuseppe	020.908			1
Leister Technologies AG Switzerland					Format
		A3	1:5		A