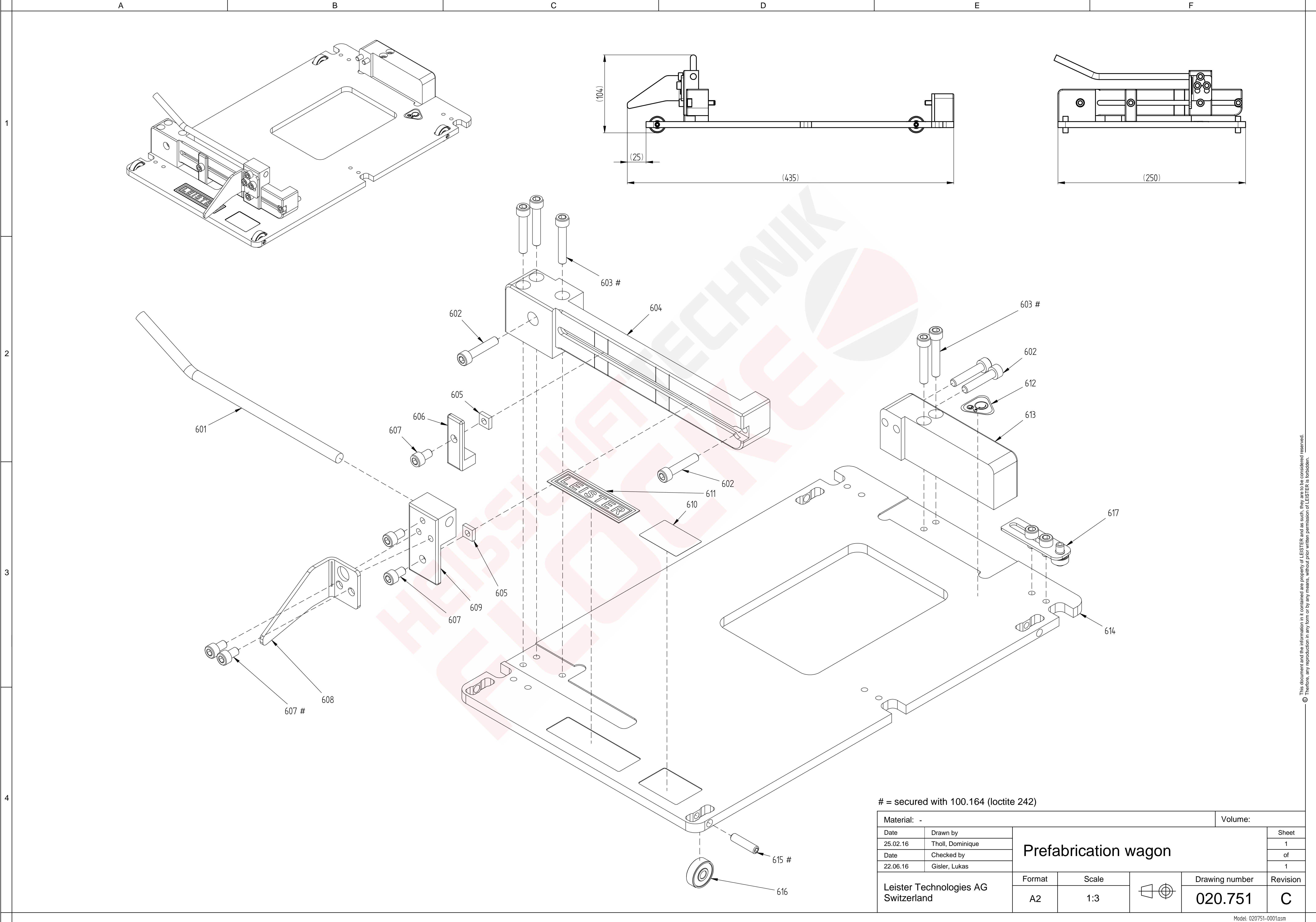


1


2

3

4



= secured with 100.164 (loctite 242)

| | | | | | | |
|--|------------------|----------------------|-------|---|----------------|----------|
| Material: - | | | | | Volume: | |
| Date | Drawn by | Prefabrication wagon | | | | Sheet |
| 25.02.16 | Tholl, Dominique | | | | | 1 |
| Date | Checked by | | | | | of |
| 22.06.16 | Gisler, Lukas | | | | | 1 |
| Leister Technologies AG Switzerland | | Format | Scale |  | Drawing number | Revision |
| | | A2 | 1:3 | | 020.751 | C |